

PREVIEW: W.EASY BOX 2.0

The new W.EASY Box 2.0 fulfills all technological requirements to a modern diagnostic system.



Many features ensure an easy and fast working:

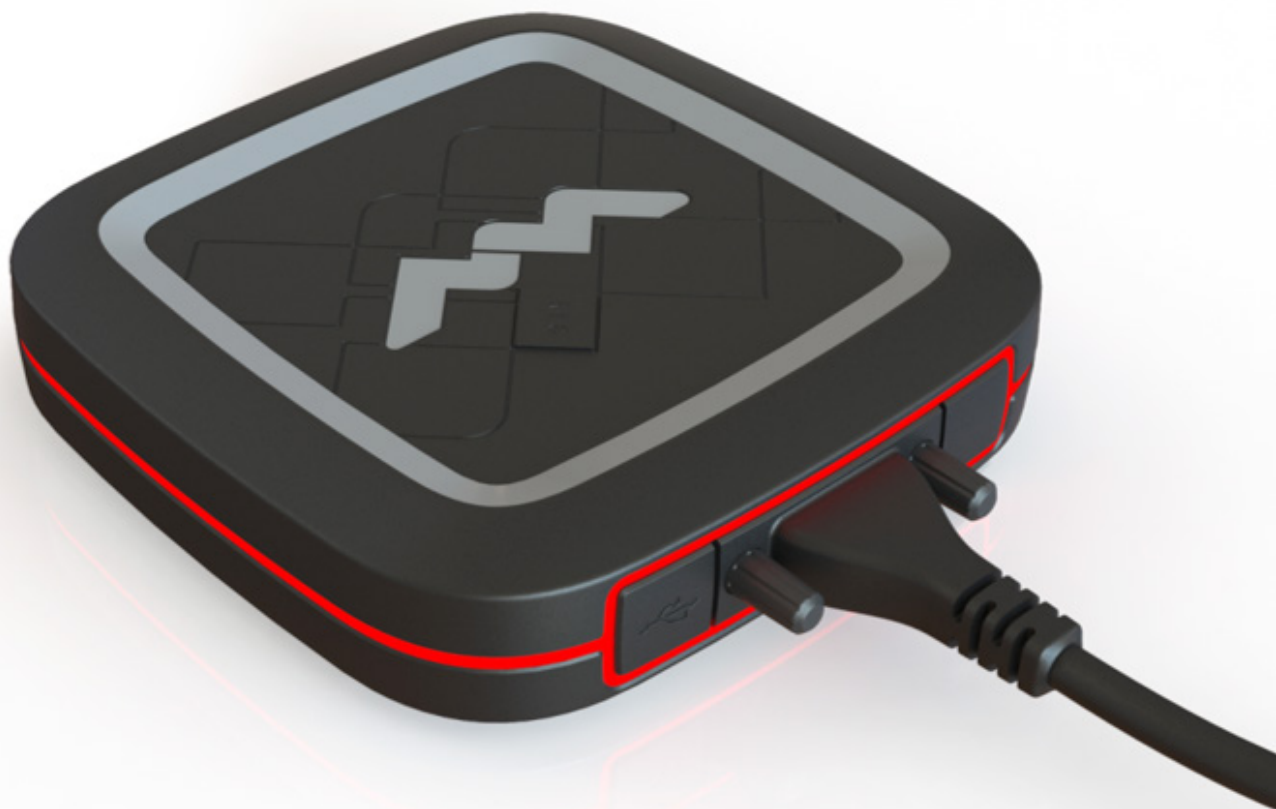
LED

Optimal diagnosis by visual display: Clear and visual display of the current communication status with the innovative, multi-colored 360° LED ring provides a secured and optimal diagnosis.

Immediate LED indicator display: The status of the vehicle battery is immediately indicated by a colored LED indicator display and prevents unnecessary troubleshooting.



Connection just like at home: The 3-in-1 solution allows now the connection establishment via USB, Bluetooth and WiFi, as well as an intelligent hotspot solution. An immediate overview of the currently activated WiFi mode is possible due to the LED indicator display on the back of the box.



Be well equipped for the future with the new W.EASY Box 2.0!



Integrated state-of-the-art electronics are combined in an innovative design and handy format.

The following additional functions are also covered by the new W.EASY Box 2.0:



- Voltage monitoring of the vehicle battery



- Faster firmware update process
- Quick-Scan
- WABCO-Scan for trailer



- Integrated flight recorder for mobile data recording



- Tough enough for use in the workshop
- Integrated original WABCO system diagnostic
- Implemented original Haldex trailer diagnostic
- EOBD / WWH-OBd standard



- OBD 16 pin connector with LED light



- Fulfills the technical requirements for diagnostic work on the latest Euro 6 vehicle platforms

WABCOWÜRTH
Workshop
Services GmbH

Schliffenstraße 22
74653 Künzelsau
T +49 (0)79 40/98 18 63-0
F +49 (0)79 40/98 18 63-5555
info@wabcowuerth.com
www.wabcowuerth.com



The W.EASY Box 2.0 in an innovative and appealing design.

Available from February 2017

